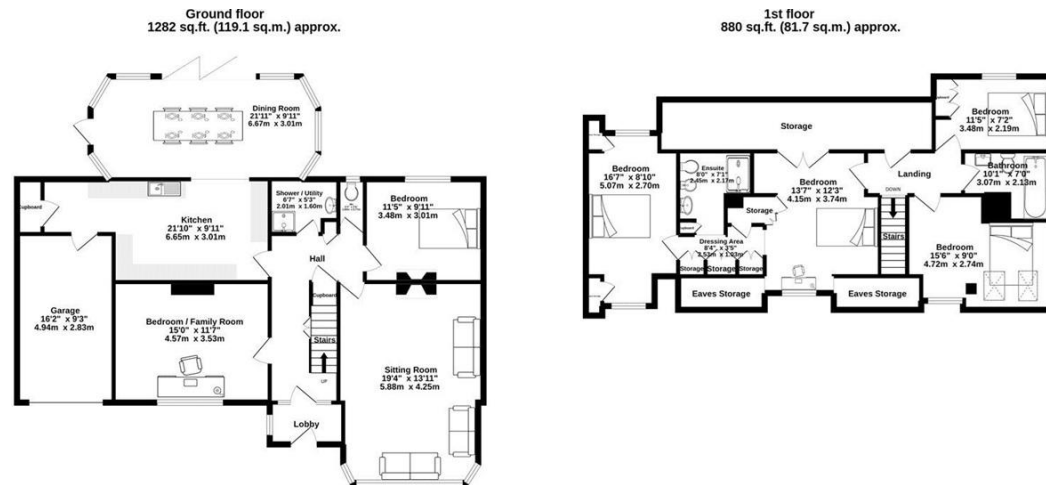




Accommodation & Amenities

- Charming 1930s detached home with driveway & garage
- Bespoke kitchen opening into a fabulous dining room
- Elegant living room with bay window and log burner
- Spacious and versatile layout for flexible family living
- Principal suite with dressing area and ensuite shower
- Family bathroom, shower room, and separate WC
- Family room/bedroom five, ideal as a study or playroom
- Four/Five generous bedrooms with lovely outlooks
- Secluded approx. 1/3 acre garden with multiple seating areas
- Eco-friendly solar panels for energy efficiency



TOTAL FLOOR AREA : 2161 sq.ft. (200.8 sq.m.) approx.

Whilst every attempt has been made to ensure the accuracy of the floorplan contained here, measurements of doors, windows, rooms and any other items are approximate and no responsibility is taken for any error, omission or mis-statement. This plan is for illustrative purposes only and should be used as such by any prospective purchaser. The services, systems and appliances shown have not been tested and no guarantee as to their operability or efficiency can be given.
Made with Metropix ©2022

Tucked away on a peaceful residential road in the heart of Felbridge, this beautifully presented 1930s detached home offers the perfect blend of period charm, modern convenience, and wonderful outdoor space. Set within approximately a third of an acre, the mature gardens provide privacy and tranquillity, while the versatile and well-proportioned accommodation makes this a home to suit a variety of lifestyles.

Upon entering, you are welcomed into a spacious entrance hall, setting the tone for the charming accommodation within. The bespoke kitchen has been thoughtfully designed with ample workspace, perfect for those who love to cook, and opens effortlessly into the fabulous dining room, a great space for entertaining while enjoying views of the garden. The cosy yet spacious living room boasts a feature bay window and a wood-burning stove, creating the perfect place to relax on cooler evenings. The ground floor also benefits from a flexible family room, a double bedroom to the rear, and a stylish shower/utility room with a separate WC—perfect for guests or multi-generational living.

Upstairs, the stunning principal suite enjoys a dual aspect, dressing area with fitted wardrobes, and a luxurious ensuite shower room. This leads through to an adjoining bedroom, currently used as a study, offering excellent flexibility. There are two further well-proportioned double bedrooms, both with lovely outlooks, and a modern family bathroom. Throughout the home, there is plenty of built-in storage, making it as practical as it is stylish.

Outside, the property has a driveway, providing ample parking for multiple vehicles, leading to a garage with an electric door. The mature front garden adds further kerb appeal with established shrubs and a charming plum tree. The rear garden is an absolute delight, mainly laid to lawn and offering seclusion and privacy, with multiple seating areas, a pergola, kids' climbing frame, greenhouse, sheds, and log store—a true haven for those who love to spend time outdoors. The solar panels add a valuable eco-friendly touch, making this home both efficient and forward-thinking.

Key information:

Freehold

Council Tax: F

Disclaimer: These particulars are for guidance only and do not constitute part of an offer or contract. All descriptions, dimensions, references to condition, and necessary permissions for use and occupation, and other details are given in good faith and are believed to be correct but should not be relied upon as statements of fact. Prospective purchasers should make their own inquiries and satisfy themselves of any matters of importance. No liability is accepted for any errors or omissions. Fixtures, fittings, and contents are not included unless specifically stated otherwise.



