

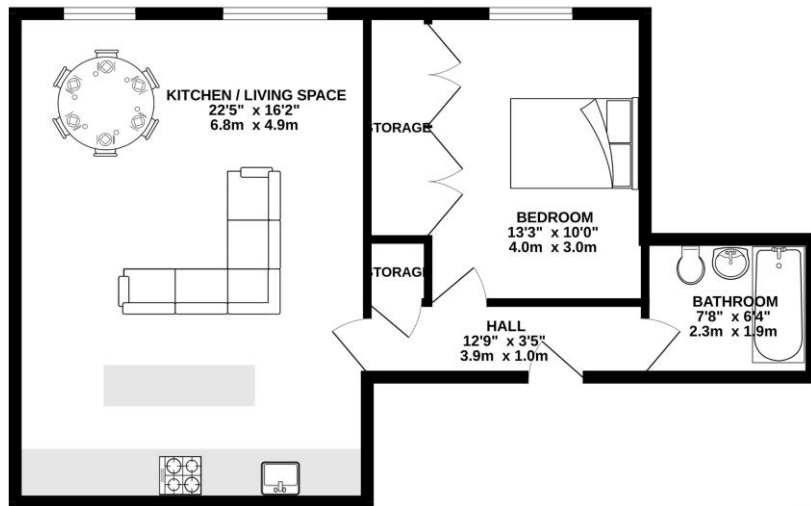


11 Kings Court, 4 Little King Street, East Grinstead, West Sussex,

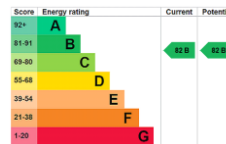
Guide Price: £200,000 to £220,000

- Tucked away top floor apartment in the heart of town
- Stylish open-plan kitchen / living space, perfect for modern living
- Sleek designer bathroom & spacious double bedroom with fitted wardrobes
- Just moments from gyms, restaurants, cafés, and vibrant nightlife
- Easy walk to East Grinstead mainline station – ideal for commuters
- Large, secure storage unit included
- Gas central heating & double glazing for comfort and efficiency
- End of Chain

TOP FLOOR
624 sq.ft. (58.0 sq.m.) approx.



TOTAL FLOOR AREA: 624 sq.ft. (58.0 sq.m.) approx.
While every attempt has been made to ensure the accuracy of the footprint contained herein, measurements of doors, windows, rooms and any other items are approximate and no responsibility is taken for any error, omission or mis-statement. This plan is for illustrative purposes only and should be used as such by any prospective purchaser. The services, appliances and appliances shown have not been tested and no guarantee as to their operability or efficiency can be given.
Made with Metropac ©2023.



Perfectly positioned on the top floor of this central development, this sleek and stylish one-bedroom apartment offers the best of both worlds — quietly tucked away, yet just moments from the vibrant town centre of East Grinstead with its array of gyms, restaurants, cafés, bars and the mainline station.

Inside, the property feels light and spacious, with a generous open-plan living area featuring a contemporary fitted kitchen complete with integrated appliances. The double bedroom is well proportioned with fitted wardrobes, while the modern designer bathroom is finished to a high standard.

Additional benefits include gas central heating, double glazing, a large secure storage unit.

Tenure: Leasehold 989 years
Service Charge £1,000 Per Annum
Ground Rent £200 Per Annum
Local Authority: Mid Sussex District Council
Council Tax Band: B
Services: Mains Gas Water Electricity

Disclaimer: These particulars are for guidance only and do not constitute part of an offer or contract. All descriptions, dimensions, references to condition, and necessary permissions for use and occupation, and other details are given in good faith and are believed to be correct but should not be relied upon as statements of fact. Prospective purchasers should make their own inquiries and satisfy themselves of any matters of importance. No liability is accepted for any errors or omissions. Fixtures, fittings, and contents are not included unless specifically stated otherwise.



